

MIDJ
INITALY

Guapa H75

design Sempere#Poli Design, 2014

Bar stool with sled base and footstool. Frame available in chrome or lacquered steel. Shell in hide. Seat height: 75cm (29.5")



Colors and Materials

Structure



White Steel



Black Seel



Chrome



Pink Gold

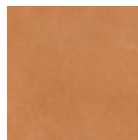


Black Nickel

Coating



TK Hide
9 Colors



Tuscan Hide
3 Colors

Dimensions

Image not found or type unknown

Dimensions

	cm	inch
A	107	42.1
B	50	19.7
C	54	21.2
D	75	29.5

Volumetric Details

Weight 11.5 Kg

Volume 0.36 mc

Package 1

Downloads

3D Guapa H75 (zip) - <https://www.midj.com/images/uploads/resources/guapa-h75-3d.zip>

Materials Certifications

TK Hide

PROPRIETIES AND ADVANTAGES

The hide is a hygienic and very practical product: it resists to wear, it's impermeable to water but, at the same time, the hide wicks air and sweat. The hide is obtained from the skin of bovines breeds and slaughtered for food purposes and subsequently treated with chromium salts.

CLEANING INSTRUCTIONS

Use only a damp, non abrasive cloth; do not use products containing solvents or alcohol that may damage the surface. It is advisable to test an invisible area of the product before cleaning it all. For good preservation of the product purchased, it is inadvisable to expose it to direct sunlight that may alter its features and colours. Any surface imperfections are natural features of hide and guarantee that it is an original product.

Materials Certifications

Tuscan Hide

Tuscan Hide does not fear to get aged since the oldest it gets the more unique it becomes.

It is a material deriving from animal's leather which suffer a process called "vegetable tanning" with natural tannins and with the help of some products biologically compatible whether for the dyeing or for the finishing.

Any possible imperfection, sign, scar, stain of the Tuscan hide surface are a natural characteristics which guarantees its originality.